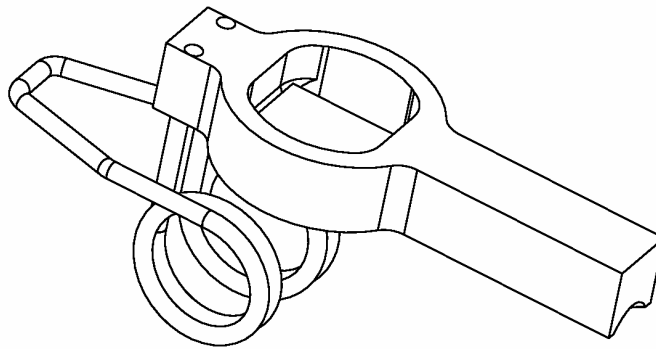




Elliptec Resonant Actuator



Design Guide

(Short Form)

September 2004

Version 2 (ENG)

Copyright

No part of this document may be reproduced in any form without prior written consent from Elliptec Resonant Actuator AG.

Copyright 2004, Elliptec Resonant Actuator AG

Disclaimer

All information is provided in good faith. Because of a wide variety of situations in which this information may be used, Elliptec cannot accept any responsibility for loss or damage resulting from unsatisfactory performance. Elliptec does not guarantee motor performance and reserves the right to change any documentation without prior notice.

Elliptec Resonant Actuator AG reserves the right to make changes without further notice to any products herein to improve reliability, function or design. Fairchild does not assume any liability arising out of the application or use of any product or circuit described herein; neither does it convey any license under its patent rights, nor the rights of others.

Life Support Policy

Elliptec Resonant Actuator AG products are not authorized for use as critical components in life support devices or systems without the express written approval of Elliptec Resonant Actuator AG.

Patents & Trademarks

The piezoelectric motors of Elliptec Resonant Actuator AG, their designs and the methods of assembly and operation are protected by a number of issued and pending patent applications worldwide. This publication does not imply any authority or license for the utilization of any patented feature.

Elliptec Resonant Actuator AG and Elliptec are Trademarks of Elliptec Resonant Actuator AG. Analogic Tech, Solvay and Bakelite are Trademarks of the respective companies.

Navigation

The electronic version of this document contains hyperlinks. Clicking on an entry in the table of contents or on a reference takes you to the corresponding section in the document.



Elliptec Resonant Actuator AG
Meinhardstr. 3
44379 Dortmund
Germany

Tel.: +49 – (0)231 – 292 702 70
Fax: +49 – (0)231 – 292 702 52

E-Mail: info@elliptec.com

www.elliptec.com

DESIGN GUIDE

(Short Form)

CONTENTS

1. Motor Mounting angle	1
2. Material Selection	1
3. Point of contact	2
4. Bearings	2
5. Operating frequencies	3
6. Motor driver electronics	4
7. Summary of keydata	4

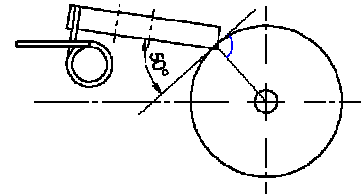
DESIGN GUIDE

(Short Form)

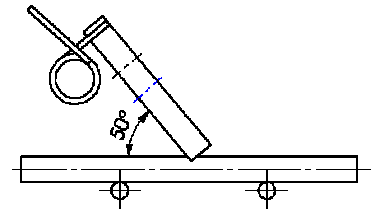
The following design suggestions are provided for reducing development time and cost.

1. MOTOR MOUNTING ANGLE

The angle between the stator and the rotor impacts motor performance. The angle is measured with respect to the longitudinal pushrod axis in the linear motor configuration or with respect to the wheel tangent in the rotary motor configuration. For the Elliptec X15G, the motor mounting angle should be 50° for equally good forward and backward performance. The angle deviation should be no more than $\pm 1^\circ$.



A reduction of the mounting angle enhances backward performance and torque while reducing forward performance. A steeper angle has the opposite effect. This may be a convenient feature for applications where unequal forward and backward motions are needed¹.



2. MATERIAL SELECTION

The rotor material and its surface quality are essential for the performance of piezo-electric motors. The material should be selected along Elliptec's empirical guidelines.

Not every material is suitable! Suitable materials should be sufficiently stiff (high Young's modulus) and temperature-stable to support the static spring preload and the driving forces.

Suggested Materials:

- IXEF 1032 from Solvay (60% glass fiber): www.solvay.com
- PF 7595 from Bakelite: www.bakelite.de
- Plastics with a glass fiber content $> 50\%$
- Duroplastics

Elliptec provides individual samples upon request.

¹ In these cases however, the motor tip geometry needs to be appropriately modified in order to provide secure rotor-stator contact. The motor may not function at very steep or very shallow mounting angles.

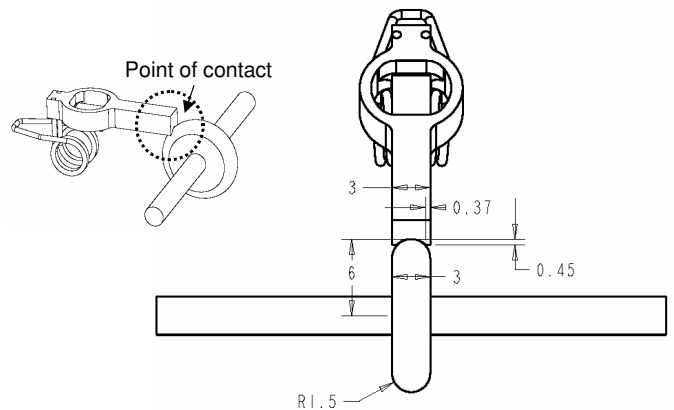
3. POINT OF CONTACT

A spring maintains the contact between the resonator and the rotor. At the point of contact, friction forces are generated that move the rotor forward or backward.

The contacting portion of the stator has a dented shape, which creates a formfitting contact with the rotor surface if the rotor has a matching rounded shape with a 1.5mm radius. If this radius is larger, the motor contact occurs at the edges of the dent, which increases wear and reduces performance.

Note:

- Burrs on the rotor surface reduce motor performance and increase tip wear.
- The contact actually improves initially after a brief running time



4. BEARINGS

A common source for poor performance is unnecessarily large friction in the rotor bearing.

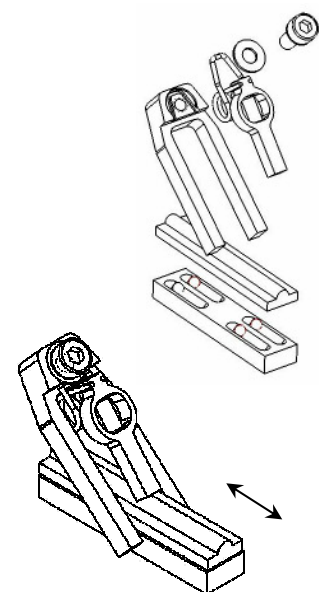
The spring holds the motor tip against the rod or the wheel with a force of up to 4N. The rotor bearing should be designed to support this load with minimal friction.

- **Linear Bearings**

A suitable linear bearing for a pushrod may have a fairly simple design.

Roller bearings are recommended, but even 4 balls (e.g. plastics) can be used in low-cost applications.

Due to relatively high friction, sliding bearings are not recommended (with the exception of multi-motor configurations)



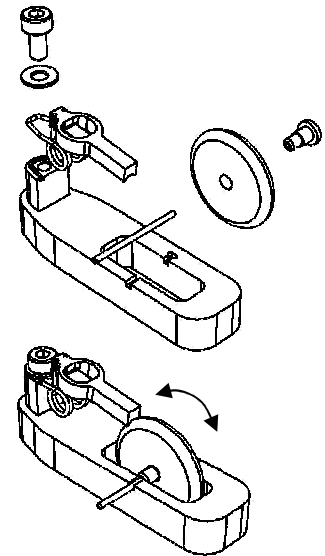
• **Rotary Bearings:**

The resulting torque and speed depend on the wheel diameter.

The friction losses depend on the wheel material, the wheel diameter, and the diameter of the wheel axle.

Rule of thumb: the diameter of the wheel axle should be no more than one twentieth of the wheel diameter. We recommend a Ø1mm axle for Ø15mm- Ø30mm wheels.

Ball bearings may be used as well.

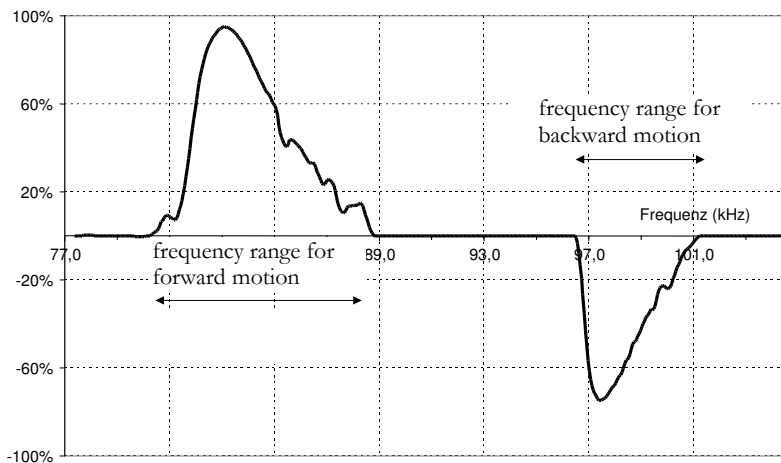


5. OPERATING FREQUENCIES

Individual motors have slightly different frequencies of operation for the forward and backward motions due to manufacturing tolerances. The graph below shows a typical velocity vs. frequency plot.

In most cases, it is recommended to cycle through several discrete frequencies within a given range of operation

This fast frequency switching creates a smooth motion of the rotor.



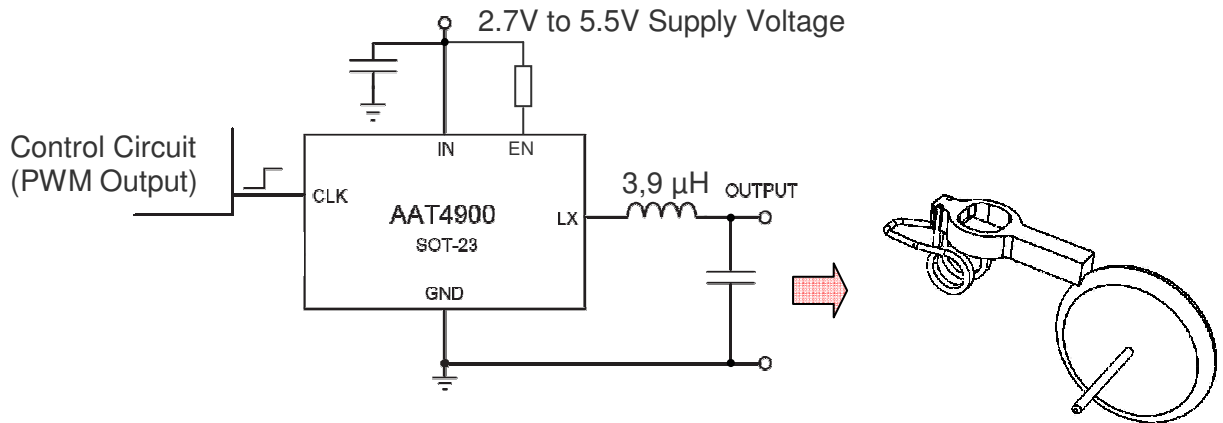
Achieving optimal motor speed requires searching for the optimal frequency of operation. Elliptec offers the necessary control software for free.

You select the control method:

- External sensors (switches, hall sensors, photoelectric barriers, ...)
- Electric feedback (requires the analog/digital-converter of the microcontroller and a low-pass filter)

6. MOTOR DRIVER ELECTRONICS

A microcontroller cannot supply a sufficient electric motor current so that a driver circuit is needed. In a 5Volt system, a simple driver is provided by the integrated halfbridge AAT4900 from Analogic Tech together with an inductivity:



You may obtain a Driver-Starterkit (AAT4900 and inductivity 3,9 μ H) from Elliptec.

Further details and circuit diagrams for inexpensive single-transistor drivers and for other supply voltages are furnished upon request.

7. SUMMARY OF KEYDATA



- Operating voltage: 6 - 8 VDC
- Temperature: -40°C bis +85°C
- Frequency for forward motion: 75 – 90 kHz
- Frequency for backward motion: 95 – 110 kHz
- Motor mounting angle: 50° +/-1°
- Linear speed: ~ 100 mm/s (recommended operating point)
- Linear force: ~ 0,2 N (recommended operating point)